

3M™ PELTOR™ WorkTunes™ Pro Headset

Technical Data Sheet

Description

The 3M™ PELTOR™ WorkTunes™ Pro Headset helps protect you from potentially harmful workplace noise while at the same time enjoy listening to the built in AM/FM radio. The built-in antenna, fast digital tuning and ability to store stations makes the hearing protector flexible and easy to work with.

Features

- High attenuating hearing protector
- AM/FM Radio headset with built-in antenna
- Digital station search
- Voice guided menu system with announced frequencies
- Store up to 5 stations
- 3.5 mm listen only stereo input* for connection to external devices (e.g. cell phone, two-way radio, Ipad).
- Auto power off, the headset will turn off after 4 hrs of non-use to save battery
- Low-battery warning at low battery level
- To reduce the corrosion caused by sweat the electronics are located in the outer part of the cup
- Available in both in headband and helmet attach versions (black).
- Compatible with 3M™ E-A-Rfit validation system

Applications

3M™ PELTOR™ WorkTunes™ Pro Headset with built-in AM/FM receiver can be used in noisy industrial sites as well as farming or landscaping activities.

Standards

3M Svenska AB hereby declares that this 3M™ Peltor™ Headset is in compliance with the essential requirements and other provisions set out in the ACMA (Australian Communications and Media Authority) regulations.

The product has been tested by an accredited laboratory in accordance with the requirements in AS/NZS 1270 and has met the specifications of hearing protectors Class 5. When selected, used and maintained as specified in AS/NZS 1269, this hearing protector may be used in noise up to 110 dB(A) assuming an 85 dB(A) criterion. A lower criterion may require a higher protector class.

*For user protection, output from headset is not above 82 dB for all sources at a maximum power of 250 mV RMS.



HRXS221A



HRXS221P3E



Hearing protection
with built-in
AM/FM radio



Hearing protection
with external
audio input

Quick Reference

	3M™ PELTOR™ WorkTunes™ Pro AM/FM Headset	
	HRXS221A Headband	HRXS221P3E Helmet Attach
Attenuation Data		
SLC80	32dB	30dB
Class	5	5
Tested to	AS/NZS1270:2002	AS/NZS1270:2003
Physical Properties		
Clamp Force	11.1 N	12 N
Weight (Batteries Included)	303g	355g
Material Listing		
Cup	ABS Plastic	
Headband	PVC, PA, Stainless Steel Wire	N/A
Helmet Attachment Arm	N/A	Stainless Steel Wire
Two-Point Fastener	POM	
Cushion	PVC foil and PUR foam	
Insert (Liner)	PUR foam	
Level Dependent Microphone for Ambient Listening	N/A	
Latch	PA	
On/Off/Mode/+/- Button	TPE	
Charger jack	Stainless Steel	
Specifications		
Battery Type	2xAA Alkaline batteries	
Operating Time	Approximately 40 hours of battery lifetime	
Wired connectivity	3.5mm listen-only stereo input jack*	
Microphone/ Type	N/A	
Operating temperature	-20°C (-4°F) to 50°C (122°F) (battery dependent)	
Storage temperature	-20°C (-4°F) to 40°C (104°F). <90% humidity	
Product lifetime	Up to 5 years (excl. batteries)	
Other		
Colour	Black	
Hygiene Kit	HY220	
Compatible with 3M™ E-A-Rfit™ Validation System	Yes	
Helmet Attachment Backplate	N/A	On Product P3E (30mm)
Use limitation: Never modify or alter this product.		

*For user protection, output from headset is not above 82 dB for all sources at a maximum power of 250 mV RMS.

Fitting Instructions

Inspect the hearing protector before each use. If damaged, select an undamaged hearing protector or avoid the noisy environment.

When additional personal protective equipment is necessary (e.g. safety glasses, respirators, etc.), select flexible, low profile temples or straps to minimize interference with the earmuff cushion. Remove all other unnecessary articles (e.g. hair, hats, jewelry, headphones, hygiene covers, etc.) that could interfere with the seal of the earmuff cushion and reduce the protection of the earmuff.

Headband Headset

To fit the hearing protector:

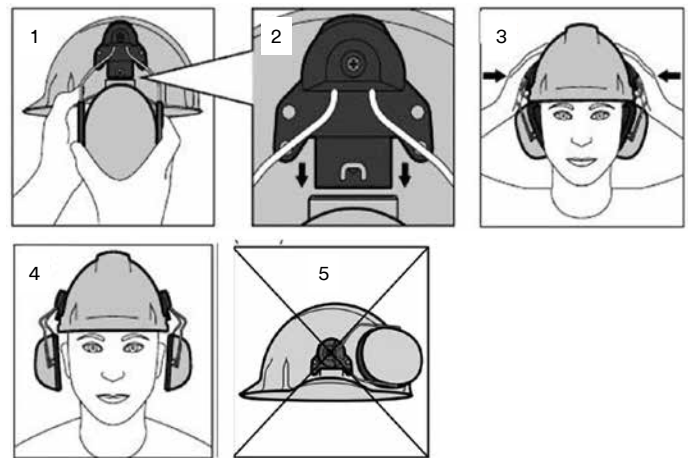
1. Slide out the cups and tilt the top of the cup out, as the cable must be on the outside of the headband (Fig 1).
2. Pull the cups apart and place the ear muffs over the ears so that the cushions form a snug seal around the ears.
3. Adjust the height of the cups by sliding them up or down while holding the headband in place (Fig 2).
4. The headband should be positioned across the top of your head (Fig 3).



Helmet Attach Headset

To fit the hearing protector:

- **Fit the cup:** Push the attachment blade firmly into the slot on the side of the helmet until it clicks into place (Fig 1 & 2)
- **Working position:** With the cups over the ears press the arms inwards until you hear a click on both sides indicating a firm seal (Fig 3).
- **Stand-by position:** Lift the cups to the fixed stand-by position. In a noisy environment the ear muffs must be worn in the working position at all times (Fig 4).
- **Parking position:** First lift the cups to the stand-by position (Fig 4), then rotate them up to the next fixed position.
- **Ventilation mode:** Avoid placing the cups against the helmet as this prevents ventilation (Fig 5).
- **Storage Position:** When the helmet is not in use, lower the earmuffs and press them inward. Keep the cups clean and dry and store at normal room temperature.



Fit Check

When hearing protectors are correctly worn, your voice should sound hollow and sounds around you should not sound as loud as before.

Attenuation Data

3M™ PELTOR™ WorkTunes™ Pro AM/FM Radio Headset, Headband - HRXS221A

AS/NZS 1270:2002

Test Frequency (HZ)	125	250	500	1000	2000	4000	8000	SLC ₈₀	Class	Clamp Force
Mean Attenuation (dB)	17.6	22.1	29.9	36.4	37.6	38.4	34.9	32dB	5	11.1 N
Standard Deviation (SD) (dB)	3.7	3.7	3.3	2.8	2.2	2.4	2.6			
Means minus SD (dB)	13.9	18.4	26.6	33.6	35.4	36.0	32.3			

Hearing protector Class 5 tested to AS/NZS1270. When selected, used and maintained as specified in AS/NZS1269, this protector may be used in noise up to 110dB(A) assuming an 85dB(A) criterion. A lower criterion may require a higher protection class.

3M™ PELTOR™ WorkTunes™ Pro AM/FM Radio Headset, Helmet Attach - HRXS221P3E*

AS/NZS 1270:2002

Test Frequency (HZ)	125	250	500	1000	2000	4000	8000	SLC ₈₀	Class	Clamp Force
Mean Attenuation (dB)	18.1	21.1	29.4	33.9	35.2	36.2	34.2	30dB	5	12 N
Standard Deviation (SD) (dB)	2.5	1.9	3.9	2.8	2.9	4.2	3.4			
Means minus SD (dB)	15.6	19.2	25.5	31.1	32.3	32.0	30.8			

Hearing protector Class 5 tested to AS/NZS1270. When selected, used and maintained as specified in AS/NZS1269, this protector may be used in noise up to 110dB(A) assuming an 85dB(A) criterion. A lower criterion may require a higher protection class.

* These earmuffs were tested in combination with the HC600 industrial safety helmet using the P3G adapter and may give different levels of protection if fitted to different helmets.

Mean = Mean attenuation value derived from testing in accordance with AS/NZS 1270:2002.

SD = Standard Deviation derived from testing in accordance with AS/NZS 1270:2002.

Mean-SD = Mean attenuation value minus Standard Deviation

SLC₈₀ = Single number rating commonly used in Australia and New Zealand to compare acoustic performance of hearing protectors. The subscript '80' indicates that in well managed hearing protector programs, the protection provided is expected to equal or exceed the SLC80 in 80% of protector-wearer noise spectrum combinations.

Class = A simplified process for selecting hearing protectors based on the wearers 8-hour equivalent continuous A-weighted sound pressure level.

3M strongly recommends personal fit testing of hearing protectors. Research suggests that users may receive less noise reduction than indicated by the attenuation label value(s) on the packaging due to variation in fit, fitting skill, and motivation of the user. Refer to applicable regulations and guidance on how to adjust attenuation label value(s). In the absence of applicable regulations, it is recommended that the attenuation label value(s) be reduced to better estimate typical protection.

The effectiveness of a hearing protector reduces dramatically when the hearing protector does not fit properly, is incorrectly inserted or is not worn 100% of the time during ALL hazardous noise events. Removal of the hearing protector, even for brief moments, substantially reduces protection and greatly increases the risk of hearing damage.

Cleaning and Maintenance

Follow recommended care and cleaning instructions in order to maintain best noise reduction and function.

Cleaning

- Carry out a visual battery condition check. Replace if battery leakage or defects are detected.
- Use a cloth wetted with soap and warm water to clean the outer shells, headband and ear cushions.

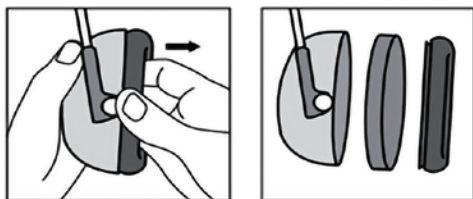
NOTE: Do NOT immerse the hearing protector in water.

If the hearing protector gets wet from rain or sweat, turn the earmuffs outwards, remove the ear cushions and foam liners, and allow to dry before reassembly. The ear cushions and foam liners may deteriorate with use and should be examined at regular intervals for cracking or other damage. When used regularly, 3M recommends replacing the foam liners and ear cushions at least twice a year to maintain consistent attenuation, hygiene, and comfort. In hot and humid environments more frequent changes may be required to maintain acceptable hygiene. If an ear cushion is damaged, it should be replaced.

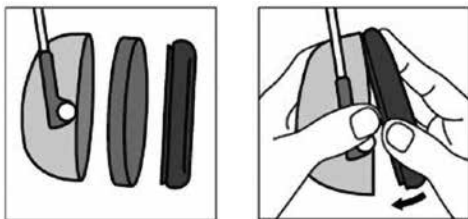
Maintenance - Changing the Hygiene Kit

Cushions and inserts can be replaced by using the approved Hygiene Kits for your 3M™ PELTOR™ Product. See 'Ordering Information' section.

1. Remove the cushions and inserts as shown.



2. Replace the worn or damaged cushions and insert with the new pair from the approved hygiene kit.



- 3M™ PELTOR™ HY100A Clean Hygiene Pads can be applied onto the earmuff cushions to help absorb sweat and moisture for improved comfort and hygiene.

Storage

- Store the product in a clean and dry area before and after use.
- Remove batteries before storing the product for extended periods
- Always store the product in the original packaging and away from any sources of direct heat or sunlight, dust and damaging chemicals.
- Storage temperature range: -20°C (-4°F) to 40°C (104°F).
- Relative humidity: <90%.
- For headband versions: make sure that no force is applied to the headband and that the cushions are not compressed.
- Helmet attachment version: ensure the earmuffs are in the storage position and that the cushions are not compressed.

Disposal

If the product is to be disposed*, it should be disassembled and disposed of as solid waste. Please see local authority regulations for disposal advice and locations

* Discard the product within 5 years from date of manufacture or immediately if damaged or cannot be cleaned.

Australia: Customers must refer to their Local Council Municipal area for disposal of electronics at their end of life.

New Zealand: Customers must dispose of electronics at their end of life in their local e-waste disposal bins.

Ordering Information

3M Code	Model #	Description
Headsets		
UU004690713	HRXS221A	3M™ PELTOR™ Worktunes Pro AM/FM Radio Headset, Black, Headband
UU004690663	HRXS221P3E	3M™ PELTOR™ Worktunes Pro AM/FM Radio Headset, Black, Helmet Attach
Accessories - Cable		
XH001676952	FL6CE/1	3M™ PELTOR™ FL6CE/1 3.5 mm Cable
Accessories - Hygiene		
UU008049353	HY220	3M™ PELTOR™ HY220 Hygiene Kit (cushion and foam liner)
XH001651351	HY100A	3M™ PELTOR™ HY100A Clean Hygiene Pad
70071691110	393-3001-2	3M™ PELTOR™ Earmuff Probed Test Cushion B, 1 Pair/Case UOM Case
3M™ E-A-Rfit™ Dual-Ear Validation System - Probe		
70071691110	393-3001-2	3M™ PELTOR™ Earmuff Probed Test Cushion B

In the box

- 1 x Headset
- 2 x AA batteries
- 1 x User Instruction

Warning

These hearing protectors help reduce exposure to hazardous noise and other loud sounds. Misuse or failure to wear hearing protectors at all times that you are exposed to noise may result in hearing loss or injury. For proper use, see supervisor, User Instructions, or call 3M TechAssist Helpline 1800 024 464.

Always ensure the hearing protection device (HPD) is:

- Suitable for the application;
- Fitted correctly;
- Worn during all periods of exposure;
- Replaced when necessary.

Important Notice

To the extent permitted by law, 3M shall not be liable for any loss or damage including any loss of business, loss of profits, or for any indirect, special, incidental or consequential loss or damage arising from reliance upon any information herein provided by 3M. Nothing in this statement will be deemed to exclude or restrict 3M's liability for death or personal injury arising from its negligence.



3M Australia Pty Ltd
Personal Safety Division
Bldg A, 1 Rivett Road
North Ryde NSW 2113
TechAssist Helpline: 1800 024 464
Customer Service: 1300 363 565
Email: techassist@mmm.com
Web: www.3M.com/au/ppesafety

3M New Zealand Ltd
Personal Safety Division
94 Apollo Drive, Rosedale
Auckland 0632
TechAssist Helpline: 0800 364 357
Customer Service: 0800 252 627
Email: techassist@mmm.com
Web: www.3M.com/nz/ppesafety

PSD Products are Occupational Use Only.
3M, PELTOR, Worktunes and E-A-Rfit are
trademarks of 3M Company.
Please recycle. Printed in Australia.
© 3M 2023. All rights reserved.
AV011511050.