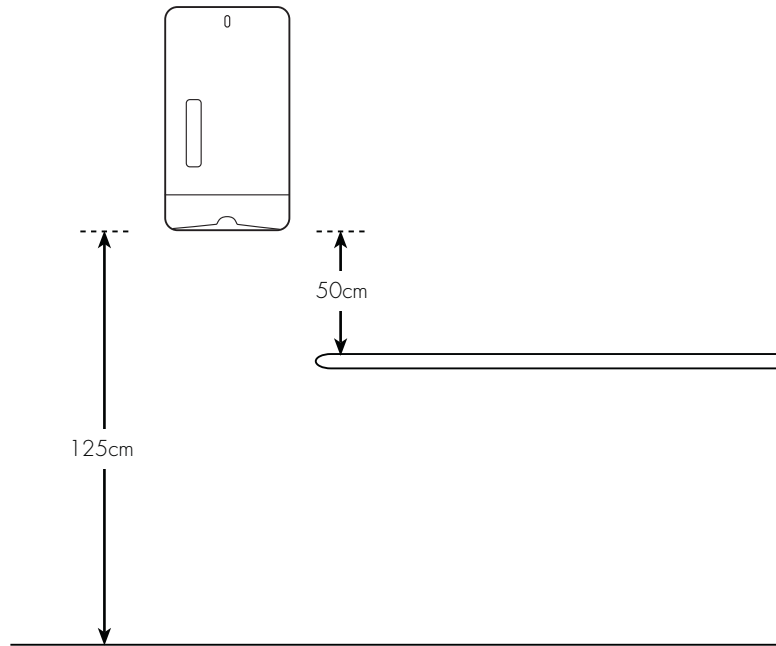
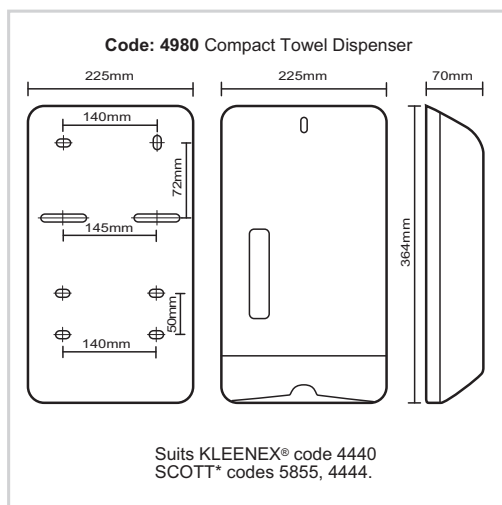


1 diagram

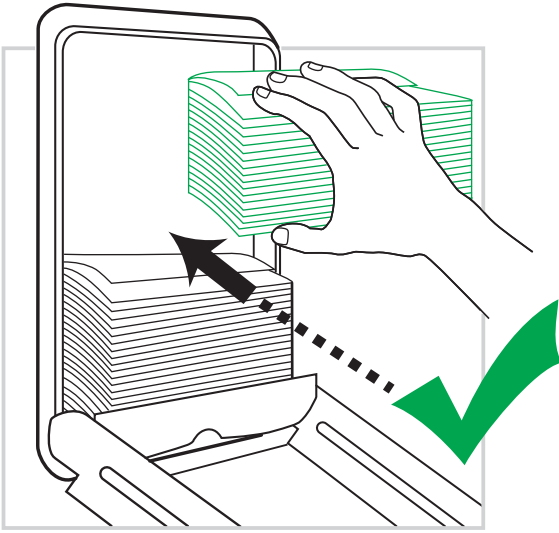


- 1.** 4 screws and 4 plugs are enclosed.
- 2.** Use an appropriate 6mm drill bit in conjunction with the enclosed wall plugs for masonry walls.
- 3.** If plugs are not to be used then choose an appropriate size drill bit.
- 4.** Using mounting template on box, mount the dispenser with bottom edge approximately 125cm from the floor or 50cm above a bench (see diagram).
- 5.** Use all mounting screws provided with dispenser as a minimum to attach dispenser to wall.
- 6.** If no mounting template available open dispenser with key and hold squarely against wall while you mark drilling holes (or see diagram 2 for measurements).

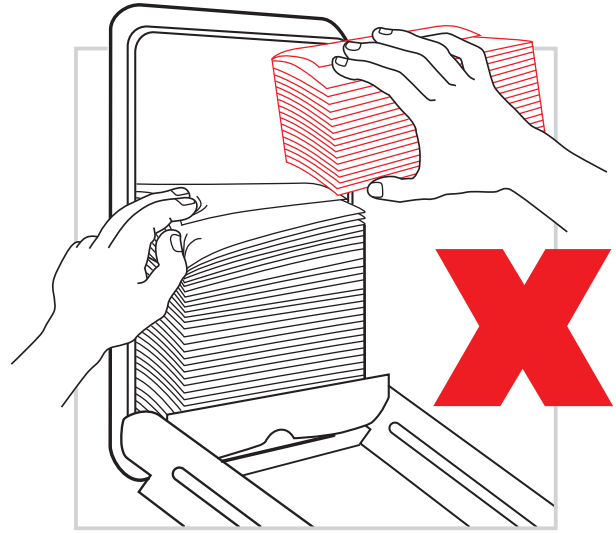
2 diagram



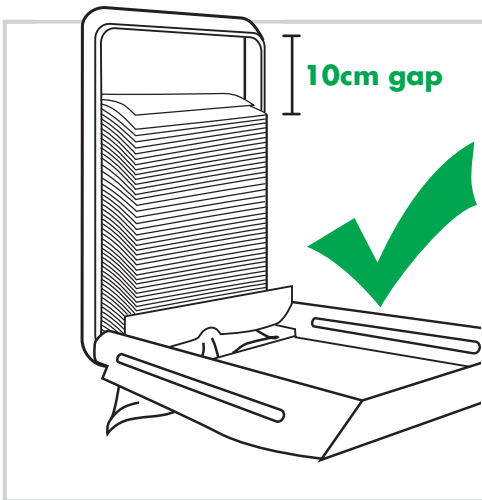
Loading Instructions - Hand Towel Dispenser



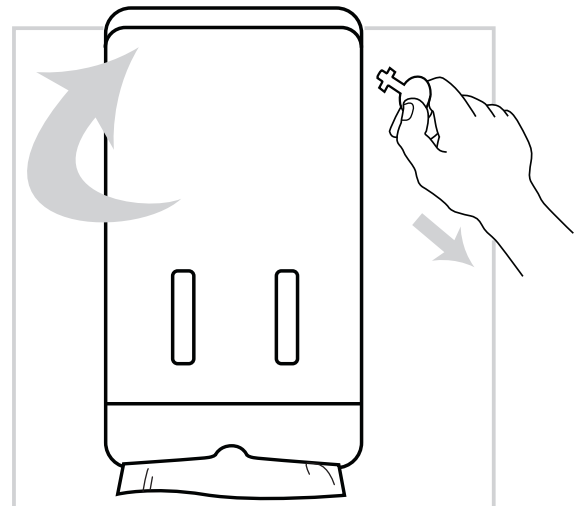
1. Use key to unlock the dispenser and lower front lid.
2. Follow instructions on wrapper and insert pack.



3. Do not overfill the dispenser.



4. Leave a 10 cm gap between tissue and top of dispenser.
5. Feed first sheet through mouth at bottom of dispenser



6. Remove key from lock and firmly close front lid.